

Exhaust Riser Energy Saving Damper - Model ES-100

Features – ES-100 is designed for maximum energy efficiency and ease of installation. Actuator is accessible from the bottom of the damper and it is installed behind the grille. Ideal installation for drywall ceiling & walls, no access door required.

STANDARD CONSTRUCTION

BLADE

Single Blade, 20 gauge galvanized steel

BLADE AXLES & BEARINGS

AXLES – 5/16" Plated hex mechanically fastened to blade
 BEARINGS – Bronze oil impregnated

SLEEVE

20 gauge x 10.75" deep galvanized steel

MAXIMUM SIZE

8" W x 13-1/2" H OD

MINIMUM SIZE

4" W x 9" H OD

FINISH

Galvanized

ACTUATOR

UL Listed Electric 24V – 120V



OPTIONAL CONSTRUCTION

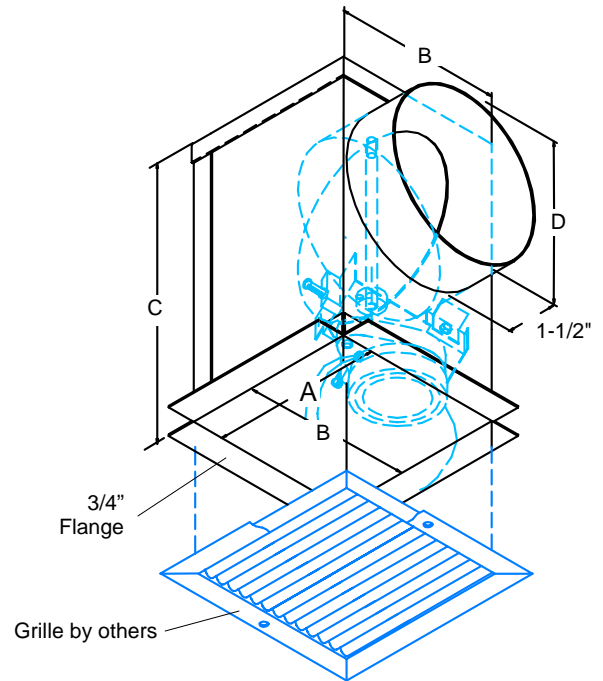
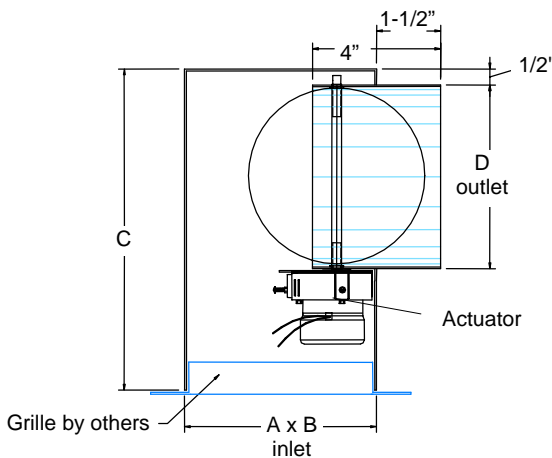
SPECIFIED MATERIAL – Available in Aluminum, Stainless

SLEEVE AND DUCTWORK CONNECTION – 10 ga. (4.3) to 20 ga. (1.0)

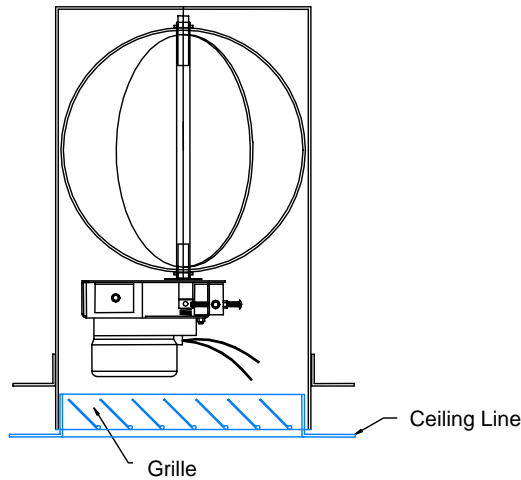
JAMB SEALS – Metal to Metal

VOLUME CONTROL – Adjuster

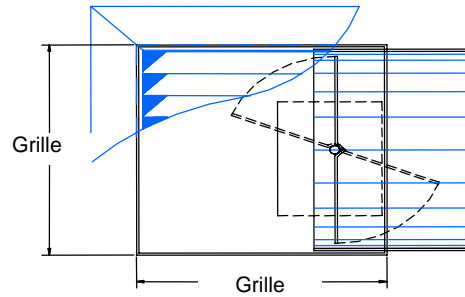
Model	Inlet		Sleeve	Outlet	Performance	
	A	B	C	D (dia.)	FA (sq. in.)	Vol. (cfm)
ES-164	6"	6-1/2"	9"	3-7/8"	11.07	62
ES-166	6"	6-1/2"	10-3/4"	5-7/8"	26.01	145
ES-184	8"	8-1/2"	9"	3-3/8"	11.07	62
ES-186	8"	8-1/2"	10-3/4"	5-7/8"	26.01	145
ES-188	8"	8-1/2"	13-1/2"	7-7/8"	47.26	263



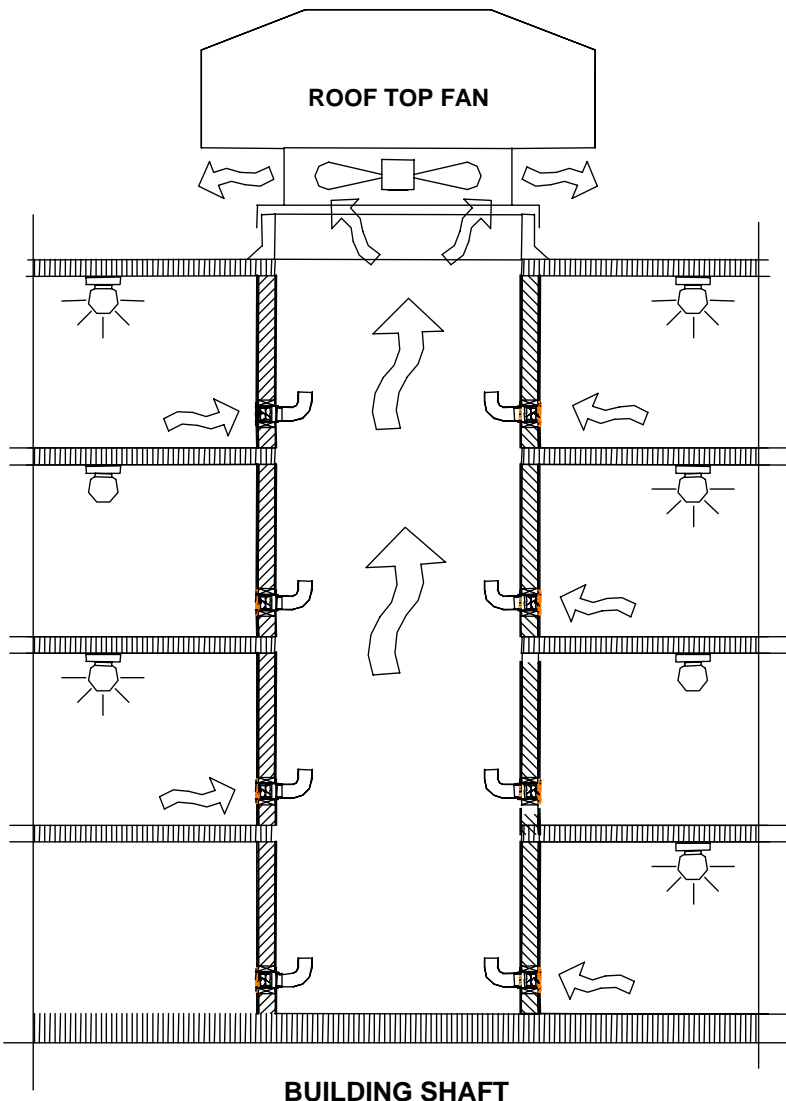
DATE	ARCHITECT / ENGINEER			CUSTOMER
PROJECT				
ITEM	QTY	W	H	DESCRIPTION



VERTICAL SECTION



FRONT ELEVATION



Typical Construction:

1. By turning the light on while the room is in use, it triggers the damper to open exhausting the air into the shaft allowing the roof top fan to draw out the stale air.
2. By turning the light off while the room is not in use, the damper will automatically close preventing exhausting conditioned air. This saves energy and operational use.
3. The rooftop exhaust fan doesn't have to pull air from every room for 24 hours a day, 7 days a week. This reduces a very significant cost of saving energy and the expenses for operating it. It will only activate whenever any room is in use.
4. As an initial savings, the size of the roof top exhaust fan and the gravity roof ventilator can be reduced to about 25%.
5. Any custom sizes can be ordered to retrofit your required sizes. The collar at the downstream side can either be square or round.