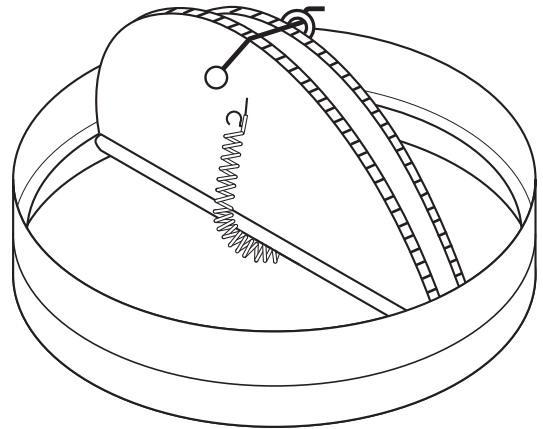


**QUALIFICATIONS:**

- **UL 263 CLASSIFIED CEILING RADIATION DAMPER.** Category CABS. (File # R8147).
- **1 hour rated for use in UL floor/ceiling design numbers L550/L574/L579/L585/M503 and roof/ceiling design numbers P531/P545/P547/P552.** (Other proprietary UL design numbers may be similar. Local approval by AHJ is required to use a Safe-Air Dowco design when not specified).
- **Meets NFPA 90A requirements.**



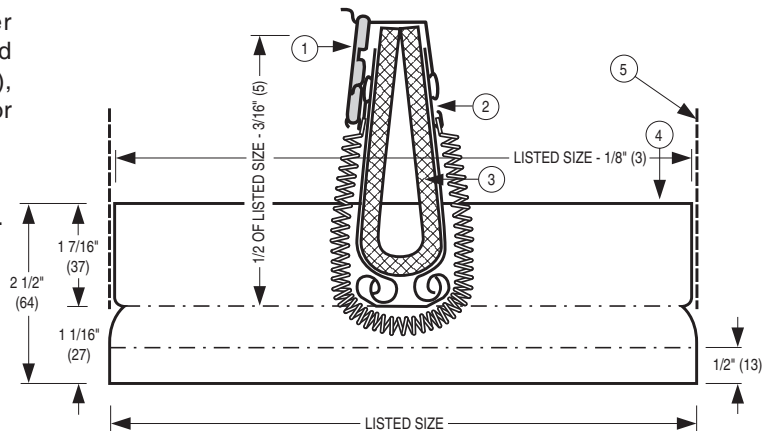
**DESCRIPTION:**

Ceiling dampers are designed to function as a heat barrier in air handling openings penetrating fire resistive membrane ceilings. Model Series 0463 has been especially designed and tested to provide protection and simple installation in specific UL design wood truss ceiling assemblies.

The 0463 assembly consists of a ceiling damper mounted in the round inlet collar of an internally insulated field fabricated sheet metal plenum (boot/register box), by others, that accommodates a steel grille, register or diffuser.

**STANDARD CONSTRUCTION:**

- 1. Fusible Link:** UL Listed, 212°F (100°C), standard.
- 2. Blades:** 22 ga. (0.85) G60 roll-formed galvanized steel.
- 3. Blade Insulation:** Non-asbestos UL Classified.
- 4. Damper Frame:** 22 ga. (0.85) G60 galv. steel.
- 5. Plenum Collar:** By others.



**OPTIONS:**

- Non-standard temp. UL listed fusible link  
 **165** 165°F (74°C)
- Installation Support Angles. 26" (660) long.  
 **ISA** 2 @ 3/4" x 3/4" x 16 ga. (19 x 19 x 1.6) or  
 **ISB** 2 @ 1 1/2" x 1 1/2" x 22 ga. (38 x 38 x 0.85)

**NOTES:**

- See page 2 for Field Supplied Steel or Fiberglass Plenum construction details.
- Shipped loose, the ceiling damper is a component of damper/plenum box assembly.
- See Models 0463-FB/GB for Factory Supplied Steel Plenum (by Safe-Air Dowco).

**AVAILABLE SIZES:**

4", 5", 6", 7", 8" (102, 127, 152, 178, 203) diameter.

For installation instructions, see IOM-SA-CRD0463INST.

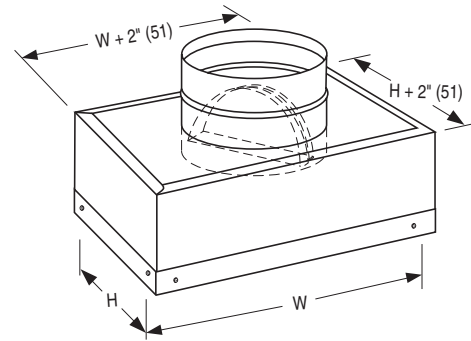
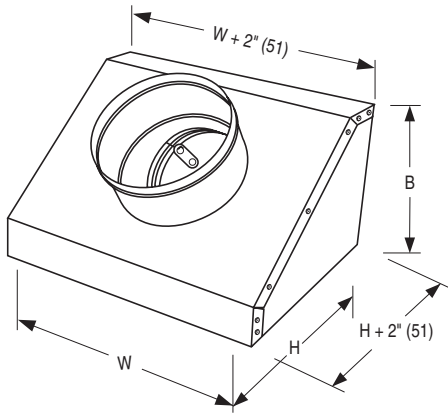
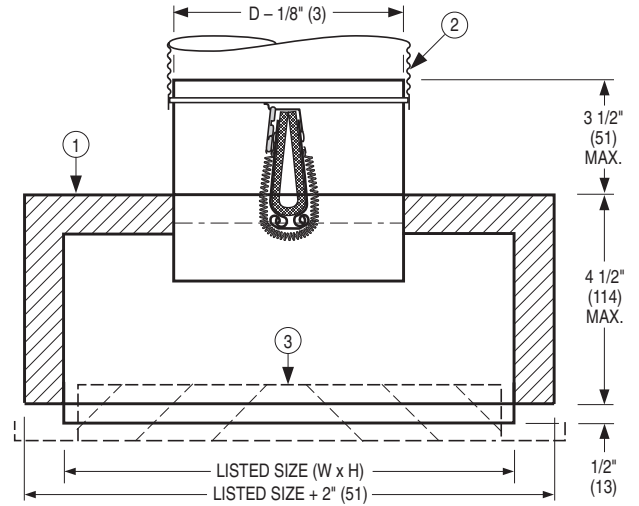
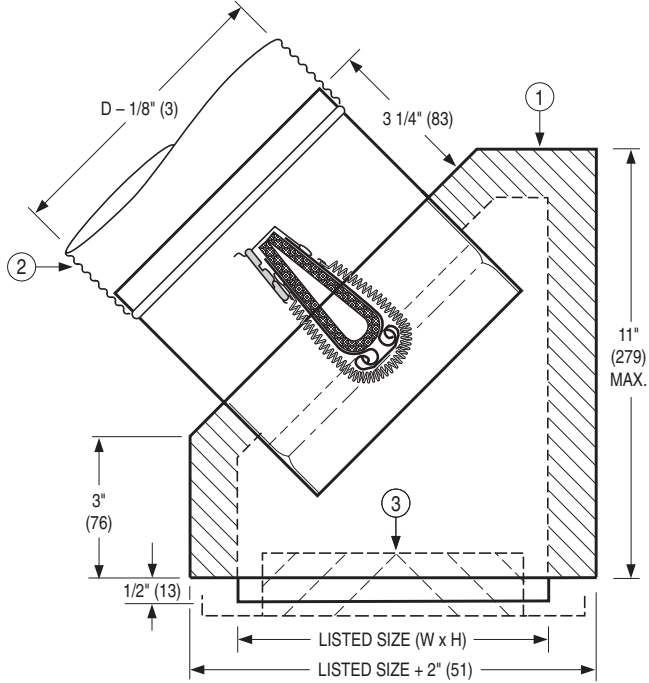
Page 1 of 2

Dimensions are in inches (mm)

<b>SCHEDULE TYPE:</b>				
<b>PROJECT:</b>				
<b>ENGINEER:</b>	<b>DATE</b>	<b>A SERIES</b>	<b>SUPERSEDES</b>	<b>DRAWING NO.</b>
<b>CONTRACTOR:</b>	4 - 30 - 19	0400-SA	NEW	0463

45° Inlet, Insulated Type F Steel Plenum (by

Top Inlet, Insulated Type G Steel Plenum (by



Plenum Construction	Plenum Type	Description/ Installation	Minimum Size	Minimum Damper Size	Maximum Size	Maximum Damper Size	Max. No. of Collars
Steel, Insulated	F	45° Inlet	8 x 4 (203 x 102)	4 (102)	14 x 6 (356 x 152)	8 (203) Dia.	1
	G	Top Inlet	8 x 4 (203 x 102)	4 (102)	14 x 8 (356 x 203)	8 (203) Dia.	1

**PLENUM CONSTRUCTION DETAILS:**

Steel plenum/sub-frame:

- 28 ga. (0.47) minimum galvanized steel, Insulation: Semi rigid Type R-6, 1 1/2" (28) or Type R-8, 2" (51) fiberglass duct liner, minimum density 1.5 pcf.
- UL Classified Class 0 or I Flexible Air Duct connection by others.
- Steel grille/register/diffuser, 26 ga. (0.55) minimum. Bottom of damper sub-frame is flush with ceiling. Standard depth for grille clearance is 2" (51).

**NOTES:**

- See minimum/maximum damper size restriction by Plenum Construction/Plenum Type, above.
- Refer to document IOM-SA-CRD0463INST for Supplementary Installation Instructions for Field Fabrication of Steel Plenums (by others).

For installation instructions, see IOM-SA-CRD0763INST.

<b>SCHEDULE TYPE:</b>				
<b>PROJECT:</b>				
<b>ENGINEER:</b>		<b>DATE</b>	<b>A SERIES</b>	<b>SUPERSEDES</b>
<b>CONTRACTOR:</b>		4 - 30 - 19	0400-SA	NEW
				<b>DRAWING NO.</b>
				0463