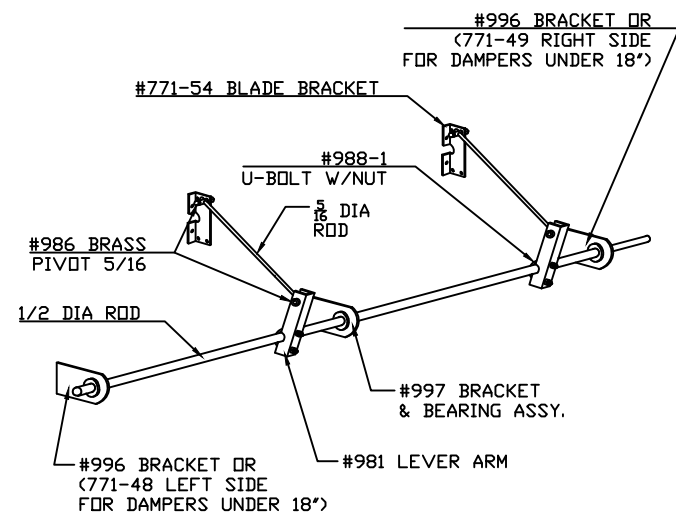
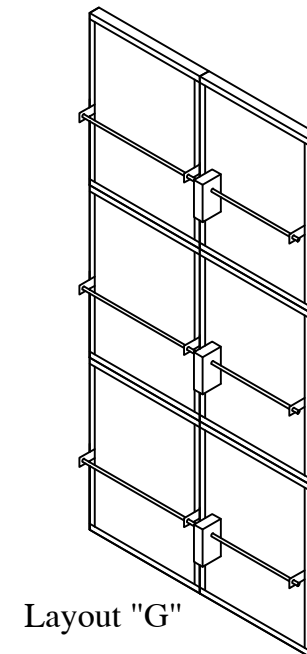
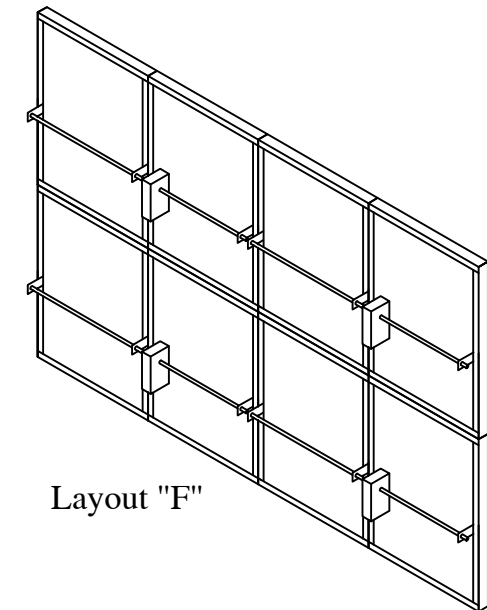
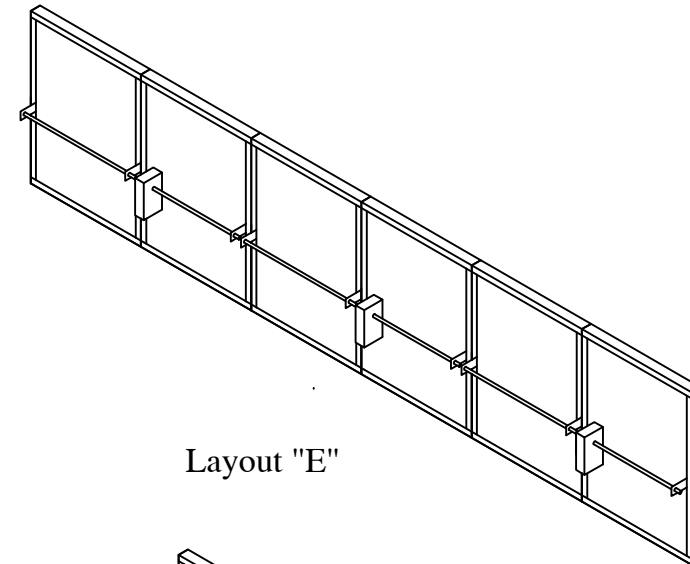
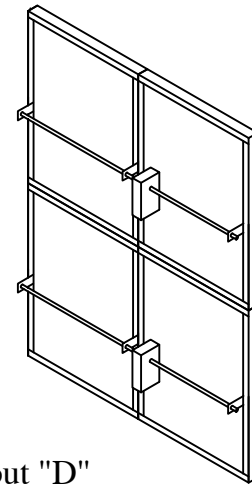
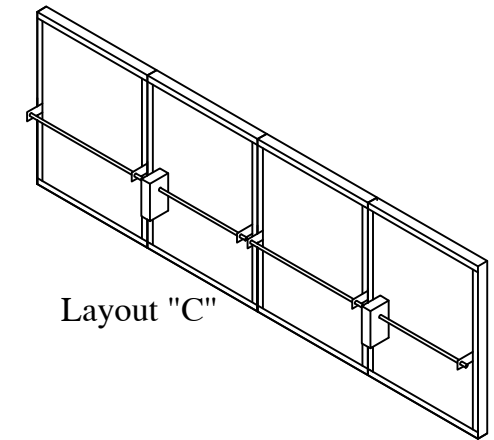
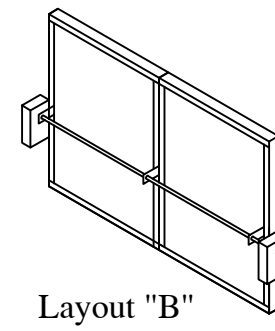
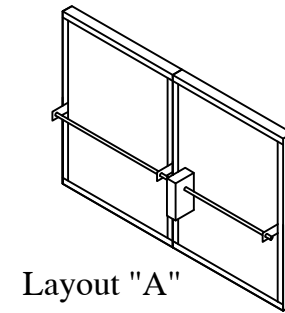


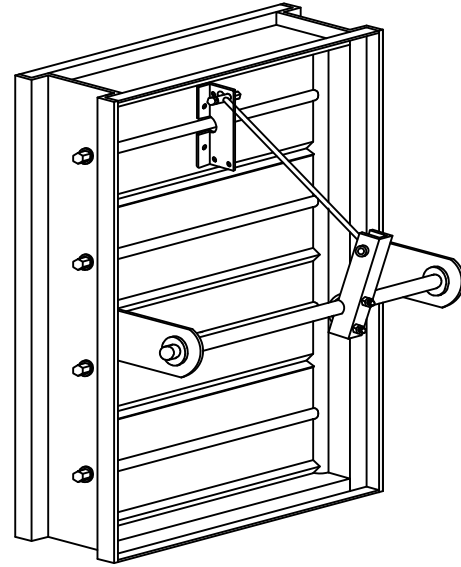
TYPICAL JACKSHAFTED MULTIPLE SECTIONAL ASSEMBLY



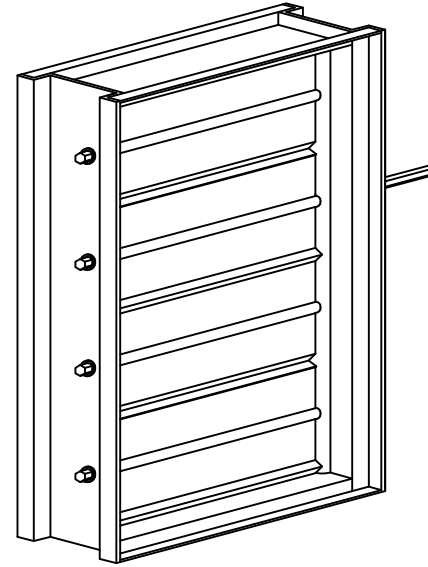
CONTROL DAMPERS
600 SERIES
JACKSHAFT LAYOUTS



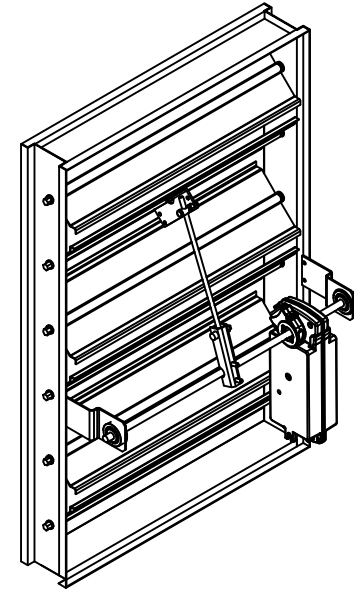
CONTROL DAMPERS
600 SERIES
SINGLE SECTIONS



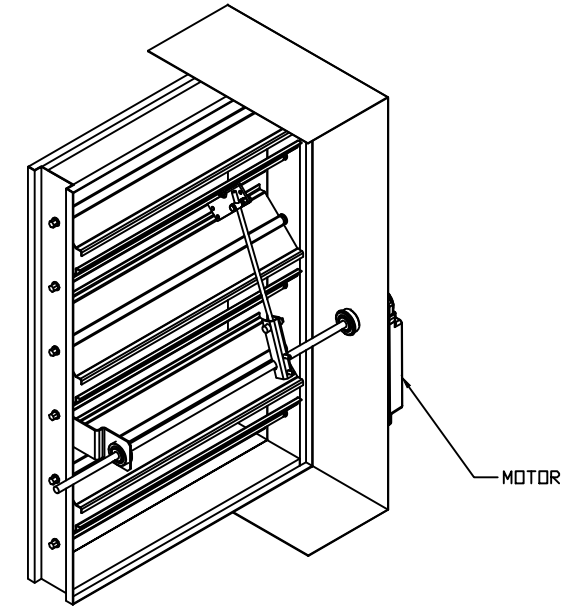
NON EXT. SHAFT
INTERNAL
Layout "SA"



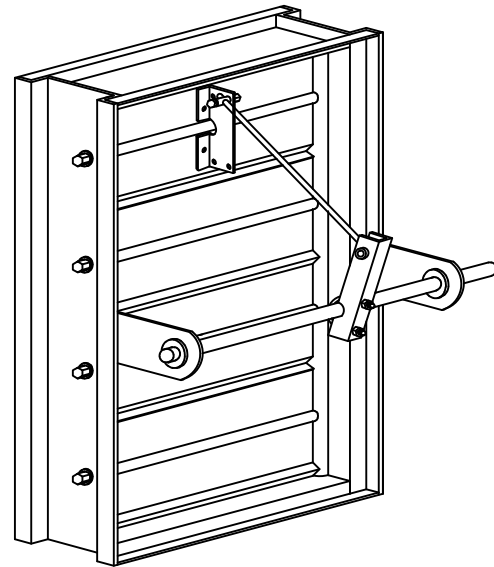
ET
Layout "SB"



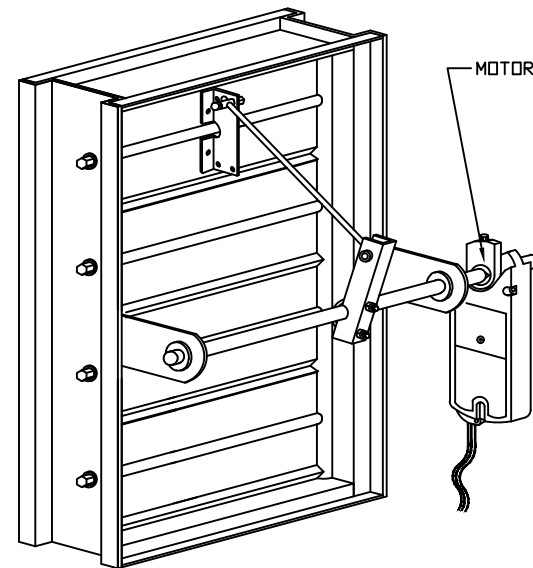
WITH MOTOR LEFT SIDE (INT)
Layout "SC"



WITH MOTOR (EXT.)
ON SIDE PLATE
Layout "SD"

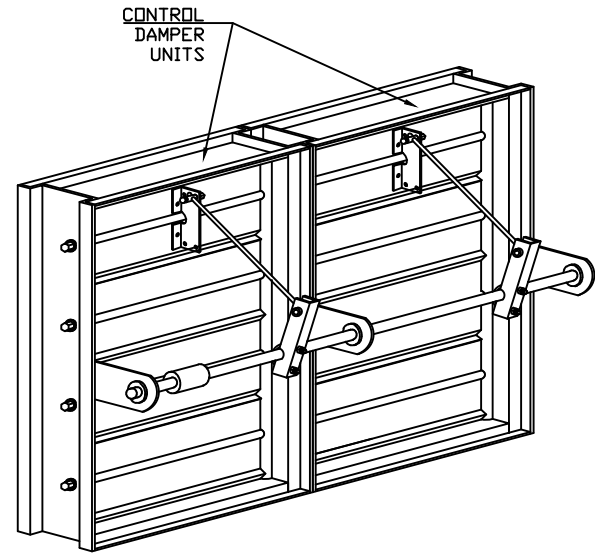


EXT. SHAFT
Layout "SE"

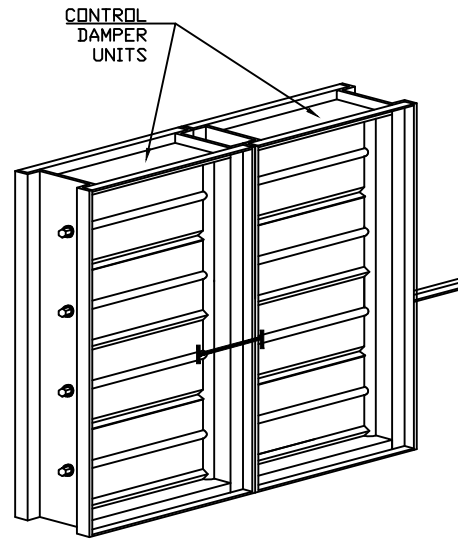


WITH MOTOR RIGHT SIDE (EXT)
Layout "SF"

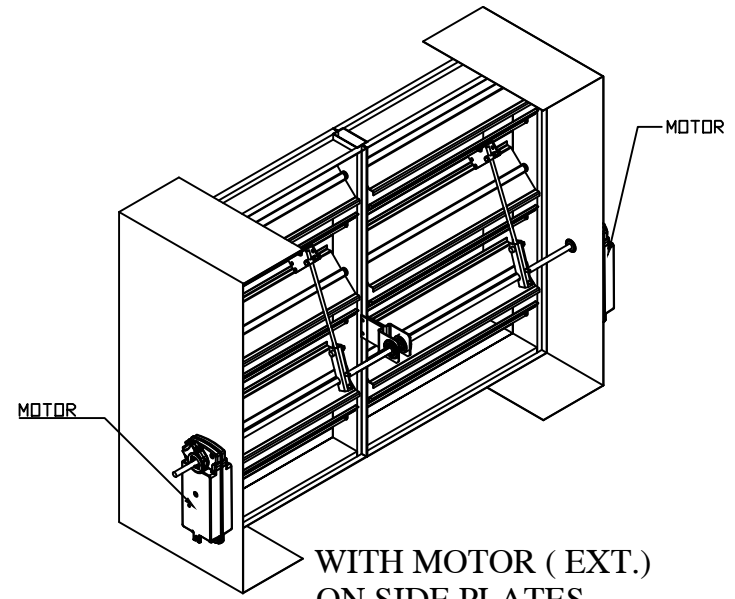
**CONTROL DAMPERS
 600 SERIES
 DOUBLE SECTIONS**



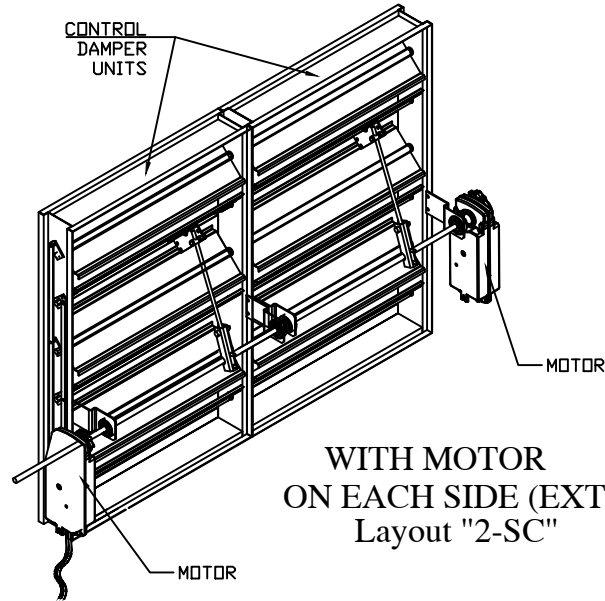
NO EXT SHAFT
 INTERNAL
 Layout "2-SA"



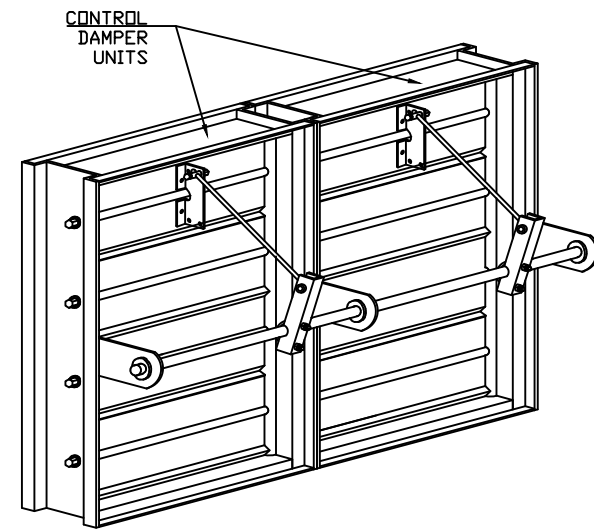
ET
 Layout "2-SB"



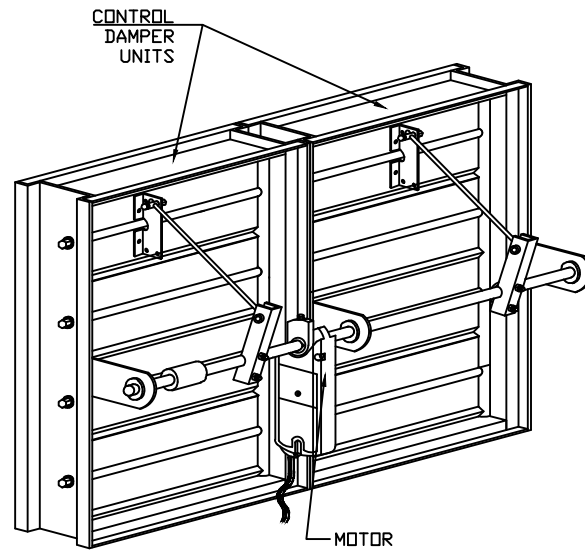
WITH MOTOR (EXT.)
 ON SIDE PLATES
 Layout "2-SD"



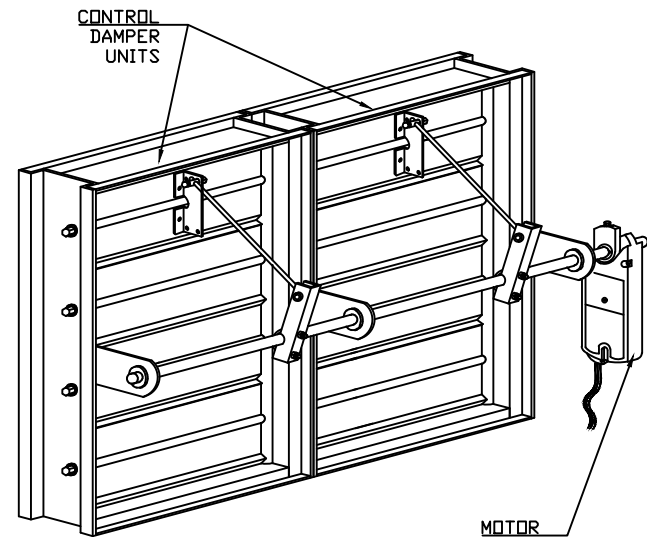
WITH MOTOR
 ON EACH SIDE (EXT.)
 Layout "2-SC"



W/ EXT SHAFT
 Layout "2-SE"



WITH INTERNAL MOTOR MOUNT
 Layout "2-SG"



WITH EXTERNAL MOTOR MOUNT
 Layout "2-SF"